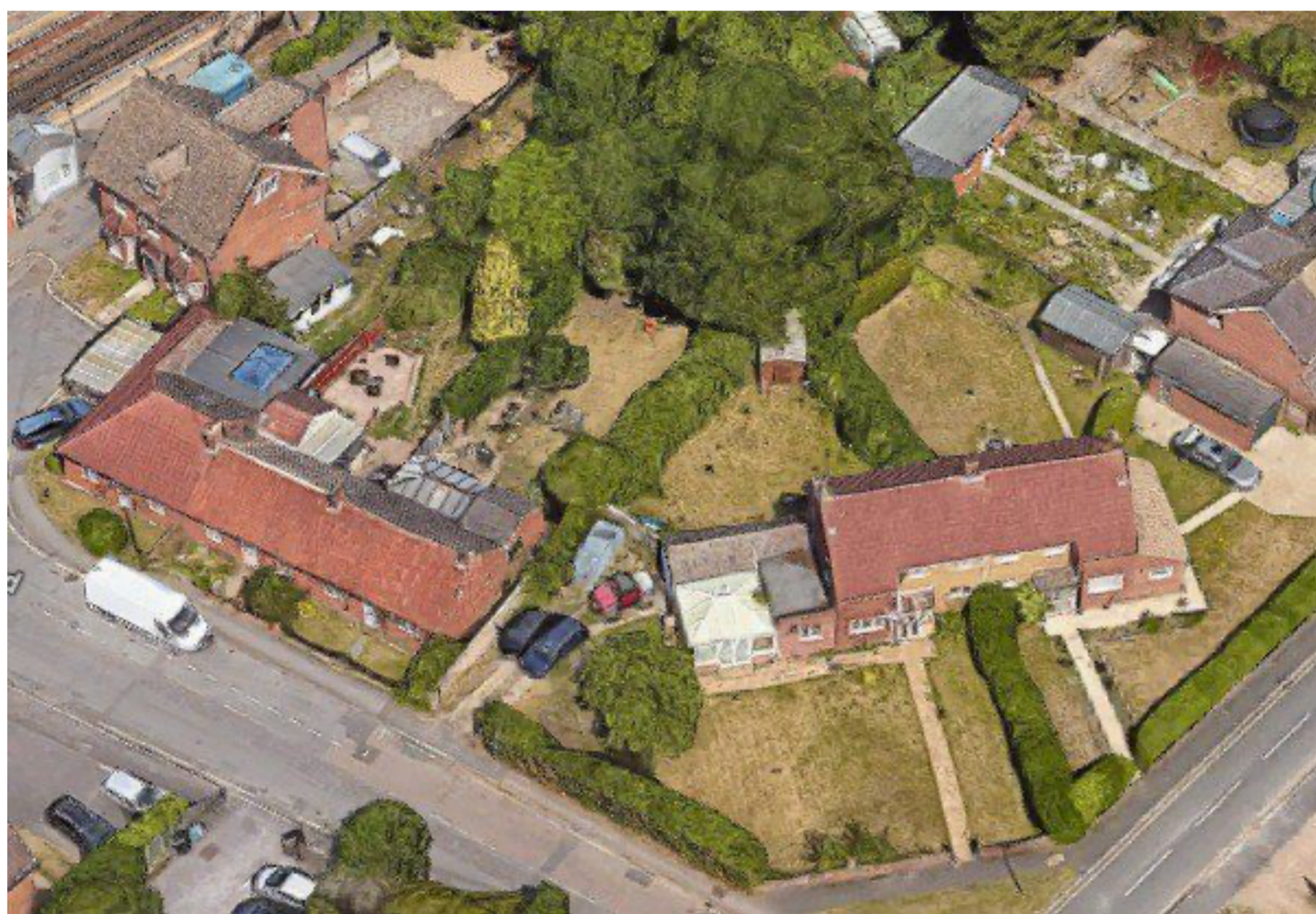


Home > Area > Earley

Earley house plans under consideration

by Nick Clark, Local democracy reporter — April 21, 2024 in Earley, News, Property



The corner of Compton Close in Earley where two houses could be demolished and replaced with four. Credit: Google.

The number of houses on a street corner near Earley railway station could double if plans submitted to Wokingham Borough Council are approved.

The owner of 1 and 2 Compton Close wants to demolish the existing properties and build four houses in their place.

Architect firm ArchDezine said the move would 'make a positive contribution to the area' in a design statement submitted to Wokingham Borough Council.

The two houses planned for demolition are on the corner of Compton Close and Station Road, a two-minute walk from Earley station.

Three smaller, two-storey houses would be built along Compton Close, with a larger house on the very end of the row.

Each of the new homes would be a detached house, and each with a detached garage.

FOLLOW US

