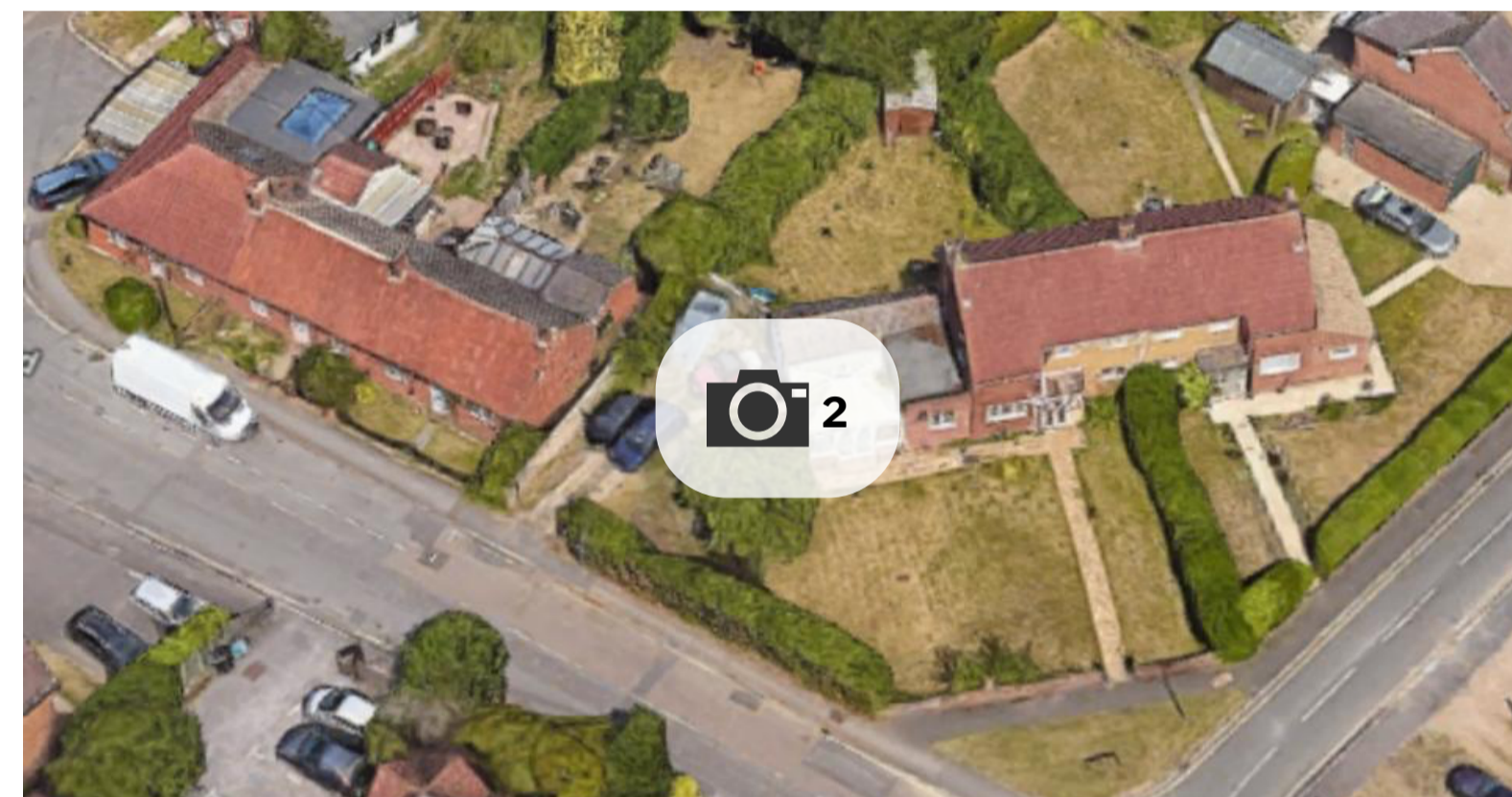


Number of houses could double on street corner in Earley

17TH APRIL 2024 PLANNING APPLICATIONS LOCAL GOVERNMENT PLANNING AND DEVELOPMENT EARLEY



By Nick Clark
Local Democracy Reporter
[nick_clarkLDR](#)

Share **0 Comments**

The number of houses on a street corner near Earley Train Station could double if plans submitted to Wokingham Borough Council are approved.

The owner of 1 and 2 Compton Close wants to demolish them and build four houses in their place.

Architect firm ArchDezine says the move would 'make a positive contribution to the area' in a design statement submitted to Wokingham Borough Council.

The two houses planned for demolition are on the corner of Compton Close and Station Road, a two minute walk from Earley Train Station.

Three smaller, two-storey houses would be built along Compton Close, with a larger house on the very end of the row. Each of the new homes would be a detached house, and each with a detached garage.

The Roofing Company
Oxfordshire | Berkshire | Wiltshire

Highly Recommended & Trusted Company

Your Family Run, Local Roofing Contractor

RECEIVE **20% off** WHEN YOU MENTION THIS ADVERT

over **25** years SERVICE & EXPERIENCE

Get involved with the news

Send your news & photos